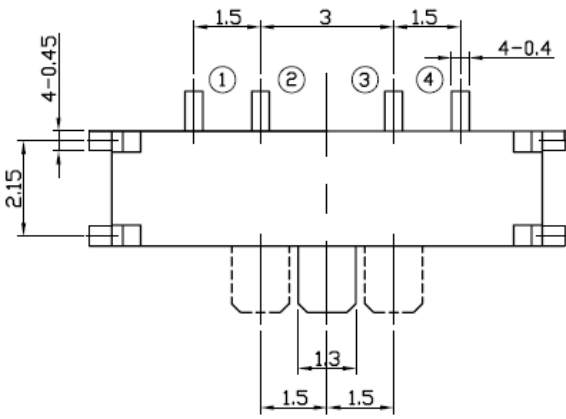
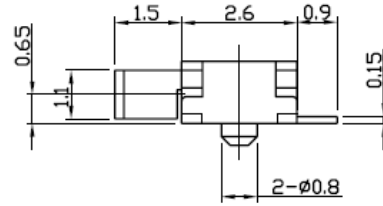
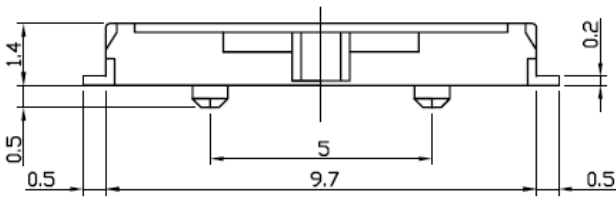
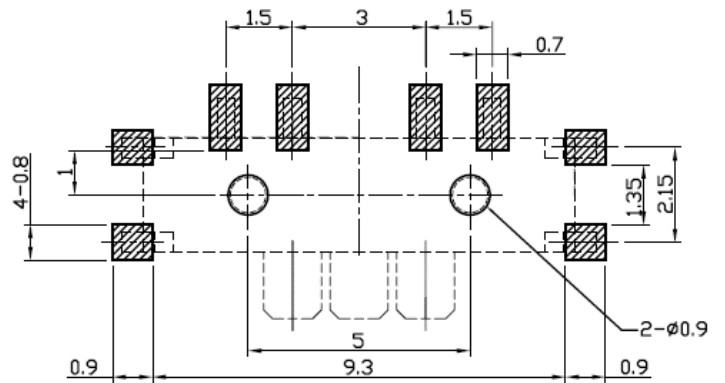


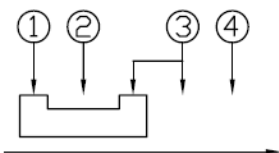
DIMENSIONS



P.C.B MOUNTING PATTERN DIMENSION
The following soldering patterns are recommended for reflow soldering



CIRCUIT DIAGRAM



SPECIFICATIONS

1. RATING : DC 4V 30mA
2. CIRCUIT : 1C-3P
3. TIMING NON-SHORTING
4. TRAVEL : 1.5 mm
5. OPERATING FORCE : 150 ± 100 gf
6. CONTACT RESISTANCE : $70m\Omega$ MAX.
7. LIFE : 10,000 CYCLES



銓基電子股份有限公司
ROKI ELECTRONICS CO., LTD.

PART NAME : SLIDE SWITCH

SCALE :

PART NO : SM13001-B-PF

UNIT : mm

TOLERANCE : ± 0.2 mm



VER : R04